



LIGHT & SHINE 2030+ 百年重建

香港真光中學百年重建計劃

True Light Centenary Redevelopment Campaign



教育的未來

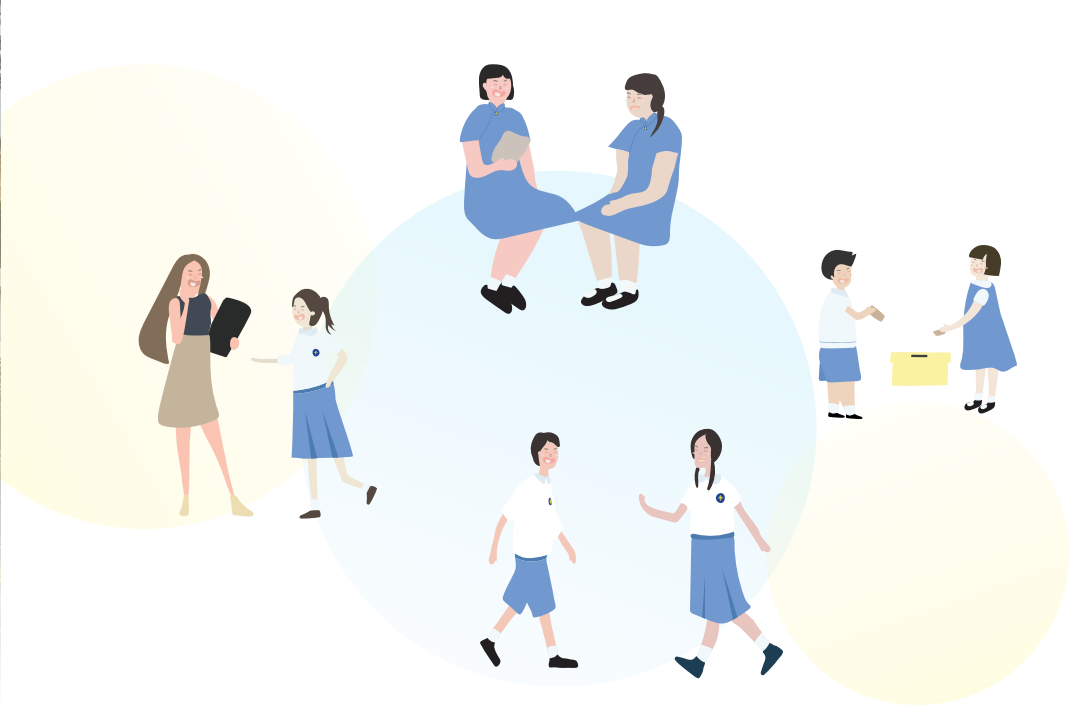
THE FUTURE OF EDUCATION

教育的未來與科技創新相輔相成，迎來機遇與挑戰。傳統課堂不斷蛻變，教學模式更趨多元——從單向授課邁向協作學習，從實體教學延伸至沉浸式探索。這些轉變背後均懷抱同一願景：培育具備自主學習熱忱的新世代。

學習應富啟發性，充滿趣味與意義。教學不止於知識傳遞，更重在點燃探索的熱情，讓這份求知動力伴隨學子茁壯成長，開創屬於自己的精彩人生。

The future of education, in sync with ever-evolving technology, is both optimistic and challenging. The traditional classroom continues to diversify in learning and teaching modes, from direct instruction to peer-to-peer collaborative learning, from analogue to immersive gamification. All striving for a common vision to nurture passion in self-initiated learning.

Learning should be inspirational, meaningful, and joyful. Education transcends mere knowledge transfer; it ignites curiosity, fosters a love for exploration, and empowers students to chart their remarkable journeys for a lifetime.



為香港真光度身打造的校園環境

A BESPOKE CAMPUS FOR TLHK

每所學校都肩負著時代使命，需與時並進，面對教學模式、空間運用及功能需求之演進。適逢真光小學暨幼稚園校舍屹立七十載，適逢其會，迎來蛻變的契機，籌建更寬敞、靈活且設施完善的新教學大樓，以切合當代需要。

我們深知，實質的提升不僅於硬件建設，更在於人心的共鳴。透過與學生、家長、教師及校友的深度對話，我們將「真光精神」融入重建理念。藉由用心聆聽、同理共創，我們深入了解各持份者的需求和願景，讓大家共同參與設計歷程，為未來的真光兒女打造一座承傳傳統、擁抱未來的理想校園。

Every school confronts escalating pedagogical, spatial, and functional challenges. As the old True Light primary and kindergarten block nears 70 years of age, it presents a timely opportunity to redevelop a New Block to accommodate larger, more versatile, and higher-quality facilities that meet today's needs.

Besides the physical upgrades that enhance our unique campus, we are invested in consulting our community of students, parents, teachers, and alumni to bring out the True Light identity in this redevelopment. Through listening, empathising, and co-creating, we are identifying pain points and aspirations that shape the participatory design processes. It will be an ongoing task to incorporate these precious insights and ideas into the final design.

Architecture Commons於2024年10月至2025年3月期間，為香港真光中學校園重建項目展開為期六個月的深入研究。研究採用多元調研方法，包括質性設計思維工作坊、量化問卷調查、實地考察及行為觀察等。研究聚焦四大核心：學生個人成長、校園設施使用體驗、未來教育趨勢，以及學校核心價值。透過學生、教師及家長教師會(PTA)的多元視角，我們經由三大主要參與途徑，融匯各持份者意見，構建以「學生為本」的校園願景。

Architecture Commons led a comprehensive six-month engagement process for the redevelopment of True Light Middle School of Hong Kong from October 2024 to March 2025.

The research process included qualitative design thinking workshops, quantitative surveys, site visits, and observations. Our research focused on four key areas: students' personal growth, current experiences with campus facilities, future learning trends, and the school's core values.

Through active participation from students, teachers, and the Parent-Teacher Association (PTA), we developed insights for a "student-centric" campus design through three main engagement channels.

設計思維工作坊 Design Thinking Workshop

- 以設計思維開展研究
- 重溫校園生活日常點滴
- 探索改進空間與發展機遇



- Using design thinking as methodology
- Retrace their day-to-day experiences
- Identify challenges and opportunities for improvement



全校問卷調查 School-wide Survey

- 廣納各方意見
- 了解對成長的期望
- 現有設施的建議
- 理想學習環境



- Ensure comprehensive feedback
- Desired personal and academic growth
- Current challenges with facilities
- Preferences for the learning environment



參與式設計工作坊 Participatory Design Workshops

- 繪畫、泥膠和LEGO創作
- 共同設計未來真光的課室、走廊、及公共空間



- With drawing exercises, clay modeling, and LEGO building activities
- Co-create ideas for classrooms, circulation, and public spaces toward their future vision of True Light



480+ 參與者
Engaged participants
370+ 問卷受訪者
Survey respondents
100+ 參與工作坊
Participated in Workshops



在研究過程中，師生分享了許多動人的真光故事——從學子的笑聲到師長的叮嚀，讓我們深入認識真光的獨特精神。透過細心梳理，我們凝煉出四個真光核心DNA：

關懷友愛·綻放光芒 Loving and Caring

這裡不僅是課堂，更是以愛織就的大家庭。師生以愛待人，互相扶持鼓勵，建立深厚情誼。在這溫暖的環境中，彼此關懷支持，攜手同行，共同成長。

參加中學妙舞歡騰，雖然結束時很晚很冷，但和朋友們一起玩很溫暖。

Despite the cold and late night, having the chance to dance with my friends during Christmas event was heartwarming.



More than just classrooms, True Light is a family woven with love. Teachers and students treat one another with kindness, offering mutual support and encouragement while forging profound friendships. Within this warm community, they grow together, hand in hand, nurtured by care and solidarity.

每逢朋友生日，我們都會買蛋糕午餐時分享。雖不豪華，但和朋友們一起慶祝非常幸福。

We would buy a cake and share to celebrate birthdays during lunch. Though the cakes were simple, celebrating with friends made these moments truly special and filled with happiness.



堅毅如光·迎難而上 Courageous and Resilient

在真光校園中，學生培養自信堅毅的特質，學會勇於迎接挑戰。透過探索未知、克服困難的過程，建立堅韌品格，積累寶貴經驗與智慧。

小學在校隊訓練時經常偷懶，但是畢業時老師告訴我，他覺得我有天份，所以我之後就努力了。

I often didn't put full effort into team practices in primary school. My teacher told me he saw potential in me when I graduated. Those words changed my mindset, and from that point on, I dedicated myself to training.



On True Light's campus, students develop confidence and perseverance, learning to embrace challenges courageously. Through exploring the unknown and overcoming obstacles, they build resilience and gather invaluable experience and wisdom.

設計立體美勞遇到困難時，老師適時的鼓勵嘗試及讚賞，學生學得開心，跳出困難，勇於克服面對新挑戰。

When students encountered challenges in 3D art projects, with teachers' timely encouragement, opportunities to experiment, and well-deserved praise, students joyfully overcame their obstacles and gained confidence to face new challenges.



多元活動·共創成長 All-rounded Development

從體育競技到藝術舞台，從科學探究到服務實踐，真光學子在豐富體驗中培養創新思維與協作精神。透過參與多元活動，在實踐中學習成長，與不同背景的人交流互動，促進全人發展。

與Art In TL 來賓討論時，一邊實踐一邊學習新事物的經驗很棒。

Through conversations with visitors at Art In TL, I gained new perspectives, creating a valuable experience of learning while doing.



From sports competitions to artistic performances, from scientific inquiries to service initiatives, True Light students cultivate innovative thinking and teamwork through a variety of experiences. By engaging in rich extracurricular pursuits, they learn through practice, interact with peers from diverse backgrounds, and develop holistically.

我跟同學一起認識燈籠椒的生長，進行參觀，再做實驗。展覽當天的努力令我們拿到表現優良獎。

My classmates and I studied about the growth of bell peppers, went on fieldtrips and conducted experiment. We presented our findings at the exhibition with enthusiasm. Our efforts were rewarded with an Excellence Award.



傳承信仰·薪火永續 Legacy and Faith

真光精神在代代師生間溫暖傳遞。從課堂學子到社會棟樑，我們用共同的成長故事編織教育薪火。這份真光情誼跨越世代，既是知識的傳承，更是心靈的共鳴，讓真光人的情誼永遠閃耀。

在真光堂的沉浸活動，我和同學在舒適環境思考信仰，讓我放鬆，紓緩壓力，從繁忙的生活休息了一會，多了與神相處的時間。

My classmates and I reflected on our faith in a peaceful setting at True Light Chapel. This quiet time provided a pause from our busy lives, allowing us to relax and find relief from stress.



The True Light spirit has been warmly passed down through generations of teachers and students. From classroom learners to pillars of society, we weave the flame of education with our shared growth stories. This legacy is not merely the continuation of knowledge, but a resonance of hearts that keeps the True Light fellowship forever radiant.

面對着 Round Trip 不同年齡的來賓，我學會了如何面對陌生人，同時也回想起六年級參與

Round Trip 時對中學的想法，所以十分難忘

As a student guide in Round Trip, I learned to interact confidently with strangers. It also brought back memories of my sixth-grade Round Trip and early impressions of secondary school, making these moments particularly meaningful.



成為未來的光芒

我們期望打造一個讓學生綻放光芒的未來校園。

這願景以六大學習主題為基礎，並以四種「真光閃耀特質」為核心——源自師生與家長的共同心聲，體現真光對全人教育的堅持與承諾——讓學生不僅能照亮自己的前路，更能以其光芒啟發並溫暖他人。

我們期望透過融合這些主題與特質，營造理想環境讓每位學生茁壯成長，成為未來的明燈。

體能發展
physical
fitness

關懷友愛 · 綻放光芒
Loving and Caring

心靈修為
spiritual

堅毅如光 · 迎難而上
Courageous and Resilient

人文藝術
cultural &
humanities

音樂及戲劇
music &
drama

多元活動 · 共創成長
All-rounded Development

科技創新
science &
tech

傳承信仰 · 薪火永續
Legacy and Faith

數理邏輯
math &
logic

TO BECOME THE LIGHTS OF THE FUTURE

We envision the future campus as a place where students can shine brightly. This vision is built upon six key themes of learning, culminating in four Shining Qualities for well-rounded development.

Rooted in the voices of students, teachers, and parents, the qualities reflect the commitment to nurturing individuals who illuminate their paths while radiating their brilliance to inspire and brighten the world around them. By integrating these themes and qualities, we aim to create an environment where every student can grow and thrive, becoming beacons of light.

★ 重點設計

- | | |
|------------|-------------------------------------|
| 1. 幼稚園遊樂場 | Kindergarten Outdoor Playground |
| 2. 運動場閃耀看台 | Sports Ground Light and Shine Stand |
| 3. 真光游泳池 | True Light Swimming Pool |
| 4. 大台階 | The Grand Stair |
| 5. 蔚藍操場 | BlueSky Sportsground |
| 6. 戶外研習坊 | Open Air Learning Hub |
| 7. 真光演講台 | True Light Lecture Hall |
| 8. 漫天星宿 | Wilderness Star Gazing Station |

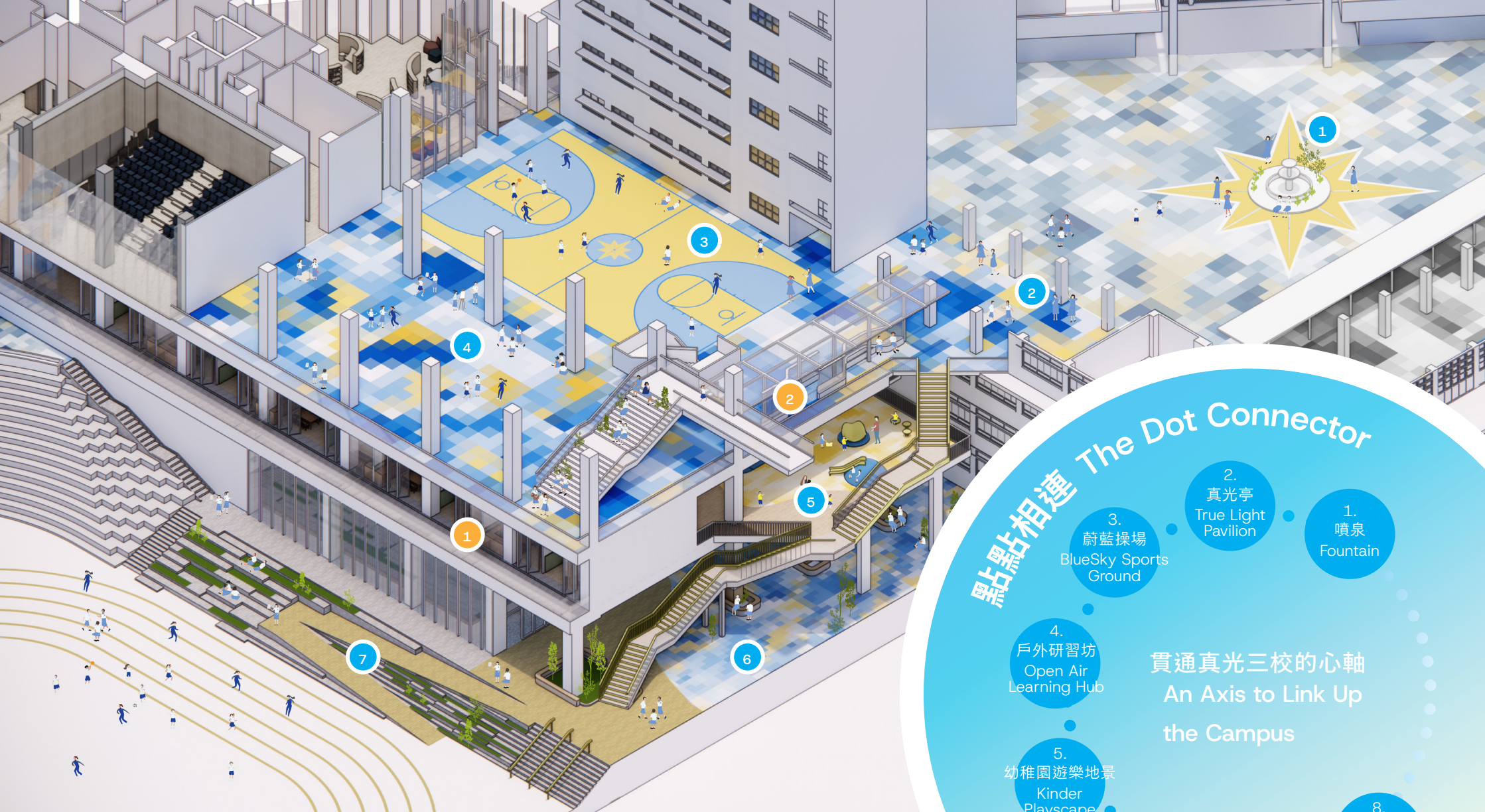
KEY DESIGN

● 特別室

SPECIAL ROOMS

- | | | | |
|-----------|-----------------------|-------------|--------------------------------------|
| 9. 數理室 | Mathtopia | 15. 幼稚園有蓋操場 | Kindergarten Covered Playground |
| 10. 實驗室 | Science Lab 2 | 16. 幼稚園圖書館 | Kindergarten Library |
| 11. 黑盒劇場 | Black Box Theatre | 17. 幼稚園視藝室 | Kindergarten Art Room |
| 12. 展示廊 | Exhibition Gallery | 18. 幼稚園課室 | Kindergarten Classrooms - 9 Total |
| 13. 中華文化室 | Chinese Culture Hub | 19. 小學課室 | Primary School Classrooms - 24 Total |
| 14. 觀景台階 | Viewing Step and Deck | | |





真光廣場

全新的校園軸線猶如一道連心橋樑，串連真光幼稚園、小學及中學三校，凝聚真光大家庭裡各級學子、師長、家長及校友。

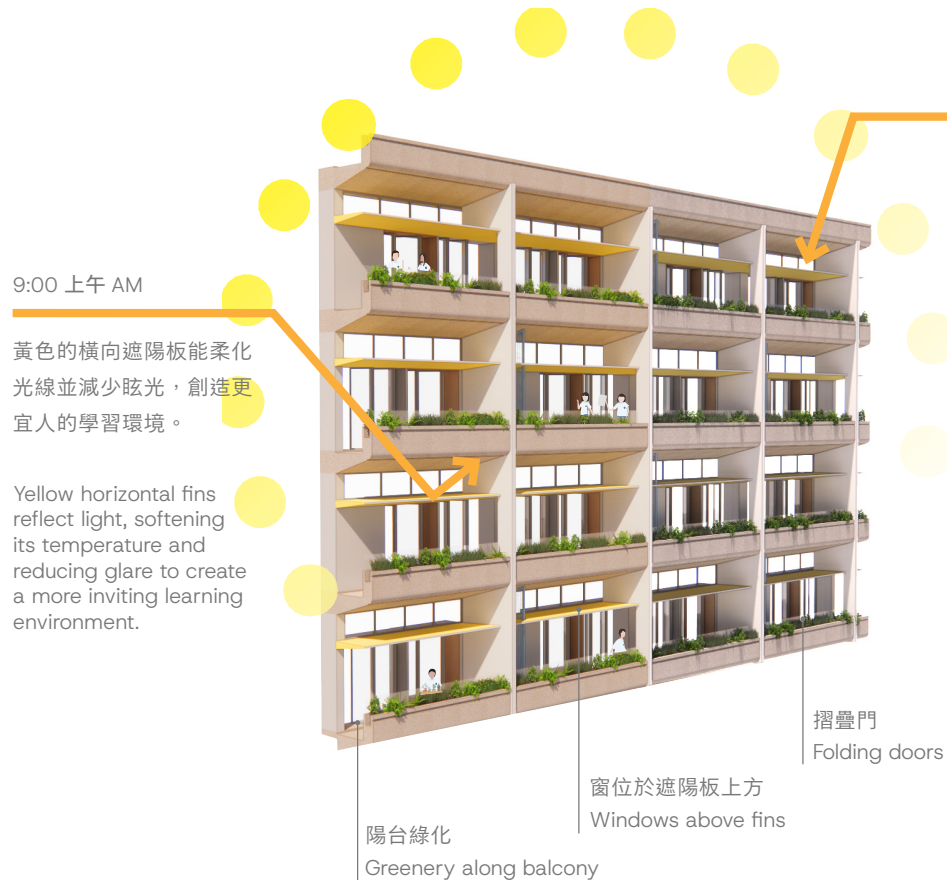
THE TRUE LIGHT PLAZA

The new circulation axis serves as a unifying bridge, connecting True Light's kindergarten, primary, and secondary schools while bringing together the entire True Light community—students in all grades, teachers, parents, and alumni.

點點相連 The Dot Connector

貫通真光三校的心軸
An Axis to Link Up
the Campus

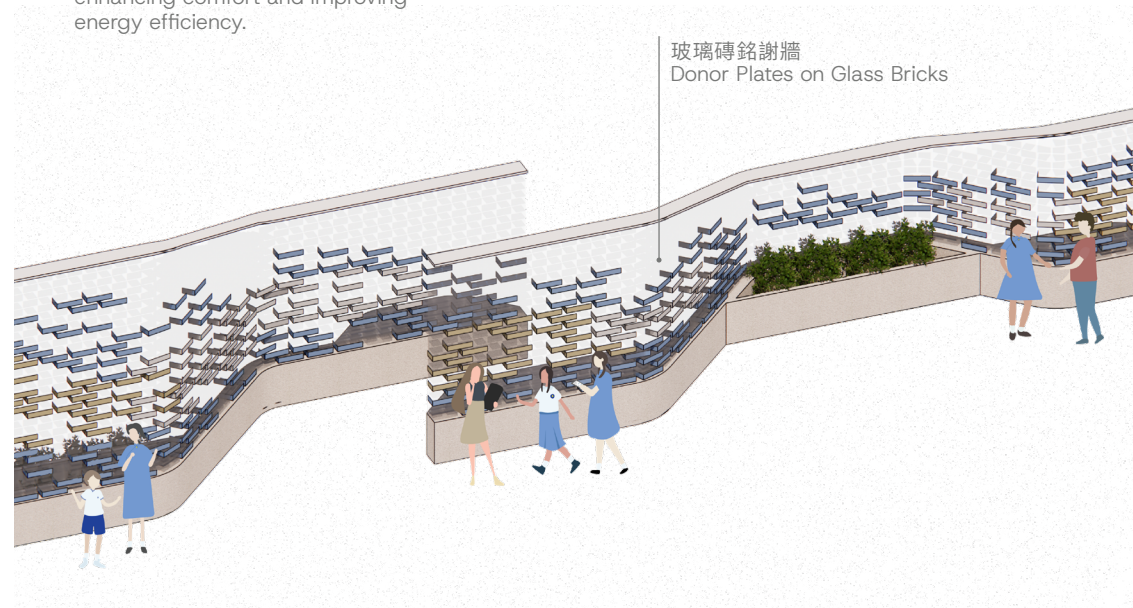
1. 噴泉 Fountain
2. 真光亭 True Light Pavilion
3. 蔚藍操場 BlueSky Sports Ground
4. 戶外研習坊 Open Air Learning Hub
5. 幼稚園遊樂地景 Kinder Playscape
6. 活力鍛煉場 Active Common Ground
7. 閃耀看台 Light & Shine Stand
8. 運動場 Sports Ground



12:00 正午 Noon

橫向遮陽板阻擋正午的熱力和光線，增強舒適感並提高能源效益。

The fins block noon heat and light, enhancing comfort and improving energy efficiency.



1 遮陽格柵—— 將陽光帶進日常生活中

從光汲取靈感，遮陽格柵將陽光幻化為豐富的色彩與光影交織。彩色面板以精確的角度設置，與流動的日光互動，隨著日光變化譜寫出獨特的光影韻律。不僅為課室帶營造舒適明亮的學習環境，同時打造融合功能與美學的學習空間，以光引領學習之路。

2 心耀傳承—— 由玻璃磚製成的捐贈牆

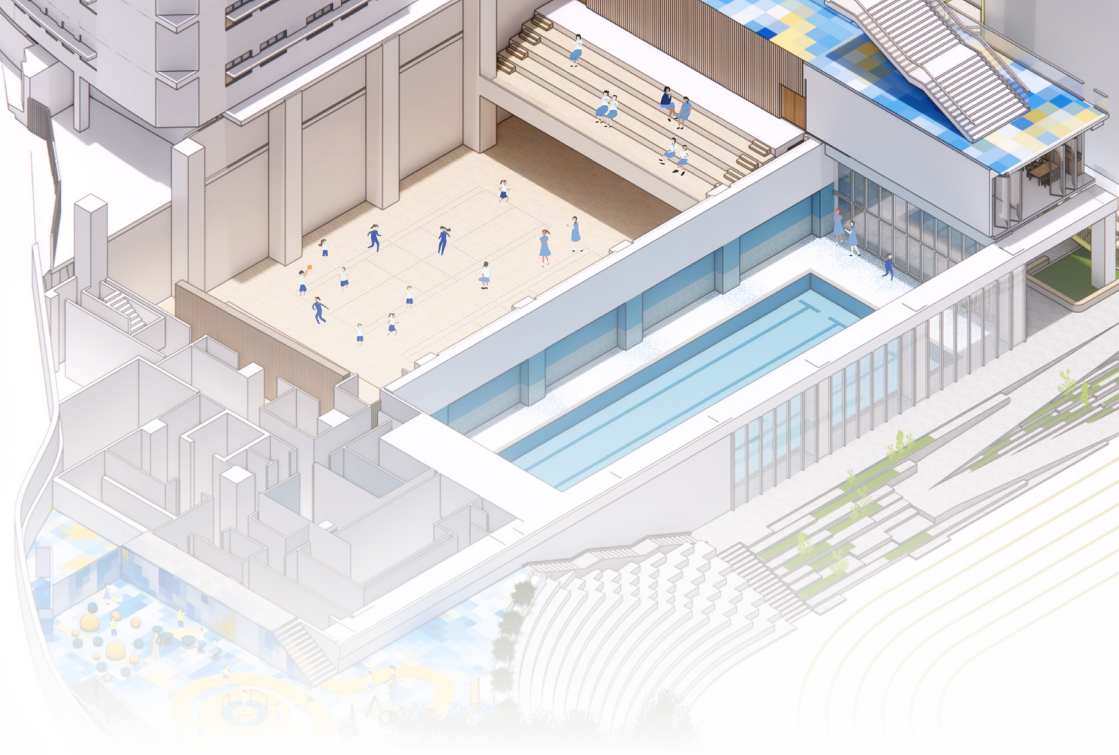
心耀傳承以玻璃磚築成，見證真光人的永恆印記。一磚一瓦，承載著捐贈者與校友的無私奉獻，串連起真光大家庭的世代情誼。溫潤光暈映照其上，化作感恩與凝聚的明燈，照亮並引領延續真光精神。

1 Brise-Soleil Dancing with the light Facade

The Brise-Soleil transforms sunlight into a vibrant interplay of colours and shadows. Designed with precision, different colored panels are placed at varying angles to interact uniquely with sunlight throughout the day. This enhances lighting comfort and efficiency, creating inspiring and functional spaces that foster learning.

2 Light and Shine Wall A Luminous Legacy in Glass

The Light and Shine Wall is a timeless tribute to the True Light community. Crafted with glass bricks, each symbolises the generosity and contributions of donors and alumni, connecting generations of the True Light family. Illuminated by a warm glow, it shines as a beacon of gratitude to inspire future generations and carry forward the True Light legacy.



我們是 ARCHITECTURE COMMONS

我們是一所專注都市創新的設計研究所。我們為市民、企業、機構和政府創建鞏固社會凝聚力的建築和方法。我們與客戶和合作夥伴並肩工作，深入了解各方想法、制定新策略，重新定義如何使用設計促進創新，並透過建築營造充滿活力、宜居的未來都市。

作為建築師，我們以設計連結人們，促成合作。從幼兒園到大學，從宿舍到共享空間，我們在設計裏尋求創新方式共享資源，追求最大實用性，凝聚人群。

We are a design agency for urban innovation. We create architecture and processes for social cohesion around citizens, businesses, institutions and governments. We work side by side with clients and partners to gather insights, cultivate new strategies, and redefine how to use design to facilitate innovation and make architecture for a vibrant and liveable urban future.

We are architects who use their design to connect people and collaborate with others. From nurseries to universities, from hostels to co-work spaces, their designs find innovative ways to share resources, maximize utility, and bring people together.

